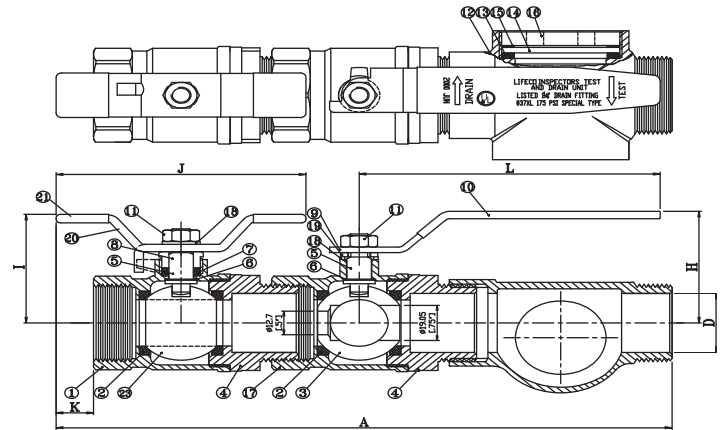


## Material Specification



## Description

The LIFECO Inspector's Test and Drain valve is a combined two position lever operated ball valve, sight glass and stop valve. Test and Drain is manufactured with sight glass assembly, provides a simplified means for testing water flow alarm devices and draining of feed mains.

## Dimension Details

Size	Metric	1	1 ¼	2
A	mm	261.5	275	371
D	mm	25.4	31.75	50
H	mm	60	60	90
L	mm	130	130	195
I	mm	61	64	79
J	mm	110	110	134
K	mm	22.5	13	13.5
Weight	kg	1.87	2.38	5.97

No.	Nomenclature	Materials
1	Body	ASTM B584 C84400
2	Packing	Rubber
3	Hand wheel	ASTM B584 C85700
4	Seat Seal	NBR
5	Lock Nut	ASTM B16 C36000
6	Clamping Ring	ASTM B16 C36000

No.	Nomenclature	Materials
1	Body	ASTM B584 C84400
2	Body Seat	Teflon
3	Ball	ASTM B16 C36000
4	Body Insert	ASTM B584 C84400
5	Stem	ASTM B16 C36000
6	Stem seat	Teflon
7	Bonnet Seat	Teflon
8	Gland	ASTM B16 C36000
9	Handle	Carbon steel
10	Handle sleeve	Vinyl
12	Brass sight gauge	ASTM B584 C85700
13	Packing	NBR
14	Clear Plate	Acrylic
15	Fiber Washer	Vulcanized Fiber
16	Fix collar	ASTM B584 C85700
17	Ball Valve	ASTM B854 C84400
18	Spring	Stainless steel
19	Washer	Teflon
20	Oval handle	Carbon steel
21	Handle sleeve	Vinyl