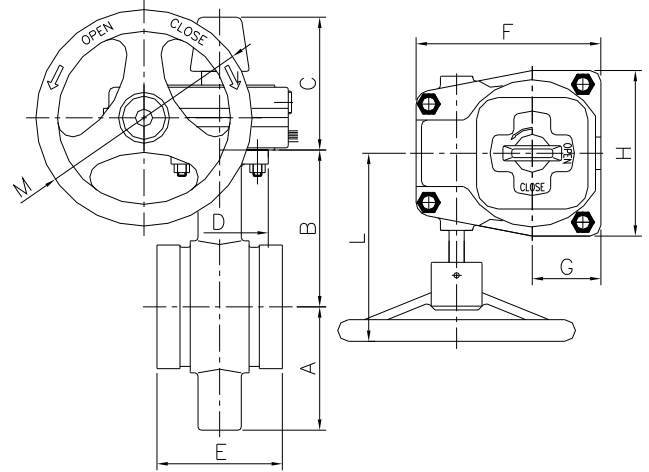
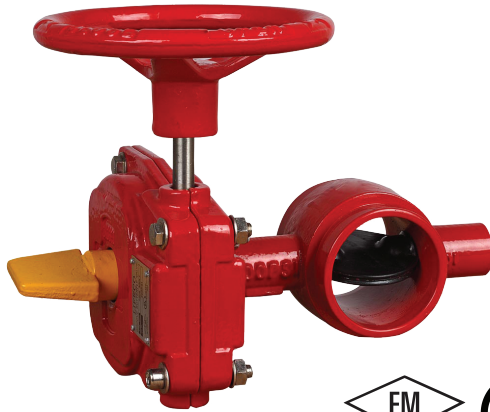


Schematic Drawing



Features

- Vulcanized disc design for bubble-tight shutoff at 300 psi
- Flag type position indicator
- Low torque operation, high cycle life
- With built-in supervisory switch
- Top flange to ISO 5211/1
- Groove Ends to AWWA C606 Standard or Metric Dimensions
- 300PSI (200PSI and 250PSI available on request)
- UL Listed for size 2" - 12"
- FM Approved for 2" - 6"

Available Sizes: 2.5", 3", 4", 5", 6", 8", 10" & 12"

Notes:

Design and material are subject to change without notice.

Material Specification

Part Name	Material	ASTM Spec.
Body	Ductile Iron	A536 65- 45- 12
Wedge	Ductile Iron, EPDM Encapsulated	
Shaft	Stainless Steel	AISI 431
Bushing	Brass	C67400
Gearbox Housing	Cast Iron	A126 Class B
Gearbox Cover	Cast Iron	A126 Class B
Worm Gear	Bronze	C62300
Worm	Stainless Steel	AISI 316
Hand wheel	Cast Iron	A126 Class B

Installation sheet for Gear Operator With Tamper Switch

Butterfly valves are provided with internal supervisory position switches. The tamper switch operates by a cam connected to the valve stem. The switch will change position and close within two (2) full turns of the hand wheel from the fully open position.

Switch #1:

For connection to the supervisory circuit

Normally closed: 2 Yellow

Normally open: 2 Red

Common: 2 White

Switch #2:

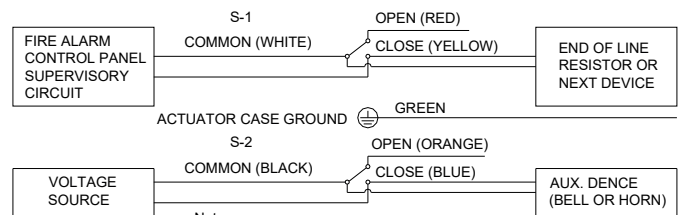
Auxiliary switch connected per authority

Normally closed: 1 Blue

Normally open: 1 Orange

Common: 1 Black

Ground Lead: 1 Green



- Notes:
1. Item no. VSION 021 C2.
2. Rated: 10A 125-250VAC.

Dimensions (mm/inch)

Size	A	B	D	E	C	F	G	H	L	M
2"	77/3.03	99/3.90	90/3.54	84/3.31	120 /4.72	170/6.69	65/2.56	155/6.10	150/5.91	200/7.87
2.5"	85/3.45	112/4.41	90/3.54	97/3.82	120 /4.72	170/6.69	65/2.56	155/6.10	150/5.91	200/7.87
3"	90/3.54	115/4.53	90 /3.54	97/3.82	120 /4.72	170/6.69	65/2.56	155/6.10	150/5.91	200/7.87
4"	108/4.25	145/5.71	90/3.54	116/4.57	120 /4.72	170/6.69	65/2.56	155/6.10	150/5.91	200/7.87
5"	120/4.72	139/5.47	90/3.54	148 /5.83	120 /4.72	170/6.69	65/2.56	155/6.10	150/5.91	200/7.87
6"	145/5.71	185/7.28	90/3.54	148 /5.83	120 /4.72	170/6.69	65/2.56	155/6.10	150/5.91	200/7.87
8"	180/7.09	200/7.87	125/4.92	133 /5.24	160 /6.30	225/8.86	85/ 3.35	206/8.11	200/7.87	300/ 11.81
10"	230/9.06	250/9.84	125/4.92	159 /6.26	160 /6.30	225/8.86	85/ 3.35	206/8.11	200/7.87	300/ 11.81
12"	260/10.23	275/10.83	125/4.92	165 /6.50	160 /6.30	225/8.86	85/ 3.35	206/8.11	200/7.87	300/ 11.81