



Features

- 95-98% accuracy rate
- 2m detection range
- Bi-directional data
- Customized hardware and software
- Data centralized for chain stores.
- Real-time detailed data
- API available
- Free software
- Plug and play installation

Product Show

Full set of LF-PC008 camera people counter includes camera, processor, software, adapter and other accessories.

Description

Supporting customer-flow analysis for retail industry, gallery, park, scenic spots, transportation junction, crowded square and so on.

Technology

- Object-tracking
- Environment-reference
- Human-detection
- Route-creation

Advantages

High Accuracy Rate - 95%-98%

- It counts according to person's head, so it can solve the problem when people walking shoulder by shoulder.
- It eliminates the invalid pass by setting a counting area.
- Different camera for different ceiling height.

Data Safety

- Network-off protection: The data can be saved in the device for 10,000 seconds (about 3 hours), even there is no network.
- The data can be exported in PNG, JPG, PDF form.
- Data backup: When the IP address is changed, the data can be backed up.

Data Transmission

- The data can be transferred to server directly.
- It can work in WiFi network.

Data Report

- Detailed valid in-out-stay data.
- Data from different entrances in different shops can be distinguished.
- Sales info can be inputted manually. It is convenient for shop to make the commercial solution.
- With a API, the data can be integrated into POS/ ERP system

Power Supply

- Adapter or POE as your requirement.



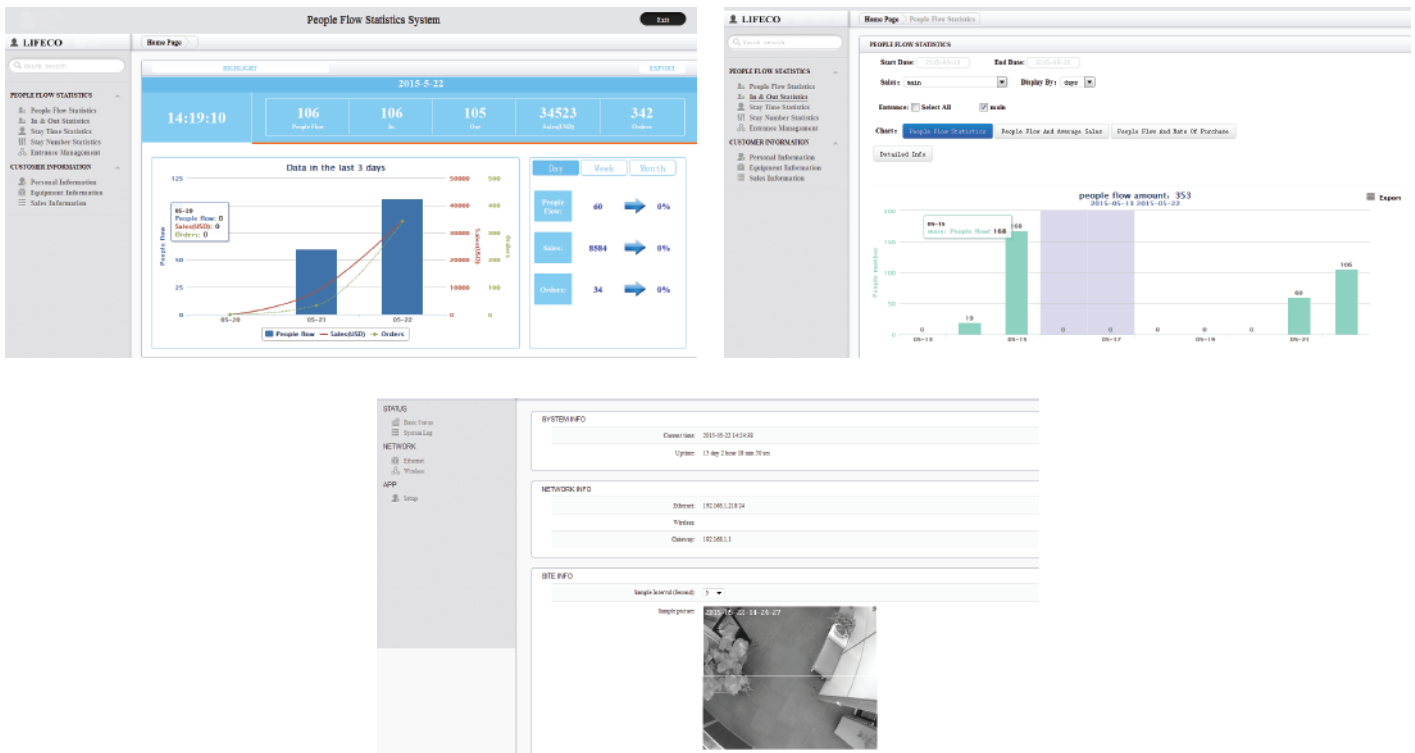
Model

Model	Installation Height
LF-PC008 - 2.1	2.6 -- 2.7 M
LF-PC008 - 2.5	2.8 -- 3.0 M
LF-PC008 - 2.8	2.9 -- 3.2 M
LF-PC008 - 3.6	3.2 -- 3.8 M
LF-PC008 - 4	3.9 -- 4.4 M
LF-PC008 - 6	4.4 -- 5.1 M
Remark	The critical height, advised to choose a large lens
	The test results is based on persons of average 1.7 M
	Effective width detection 2 M

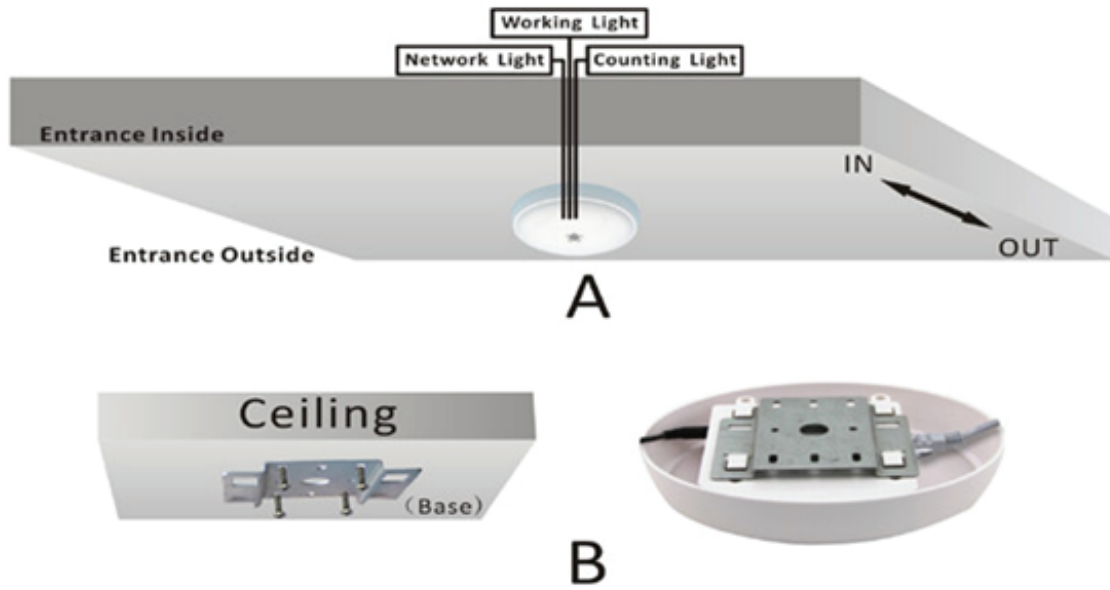
Specification

Size	18.9(L)*14.5(W)*5.8(H)CM	
Processor	ARM cortex A7>1GHz (28nm)	
Sensor	Video Input	cmos /Simplex high definition
	Video Compression standard	H.264, YUY2
	Video Definition	Adjustable
	Image Processing	Exposure Control / Gain Control / White Balance / Gamma Correction
	Video Frame rate	30fps
	Measuring Range	2m
	Installation Height	2.5-5.0m
Port protocol	Network Interface	RJ45, 10M/100M, Adaptive to Ethernet port
	Protocol Standard	802.11a or 802.11b/g
	Maintenance Interface	Micro USB
	SD card	Built-in, 8G ~ 32G
	Electronic Clock	Built-in, RTC module
	Remote Upgrade	Upgrade By The Website
	Physical Parameter	Size
Weight		200g
Adapter		+5V/2A
Power		≤10W/ POE optional
Hardware Monitoring		Hardware Watchdog
Temperature		-20°C ~ +65°C

Software



Installation - Plug and Play



The effective detection width per device is 2 meters. Multiple devices can be installed side by side for wide entrance:

